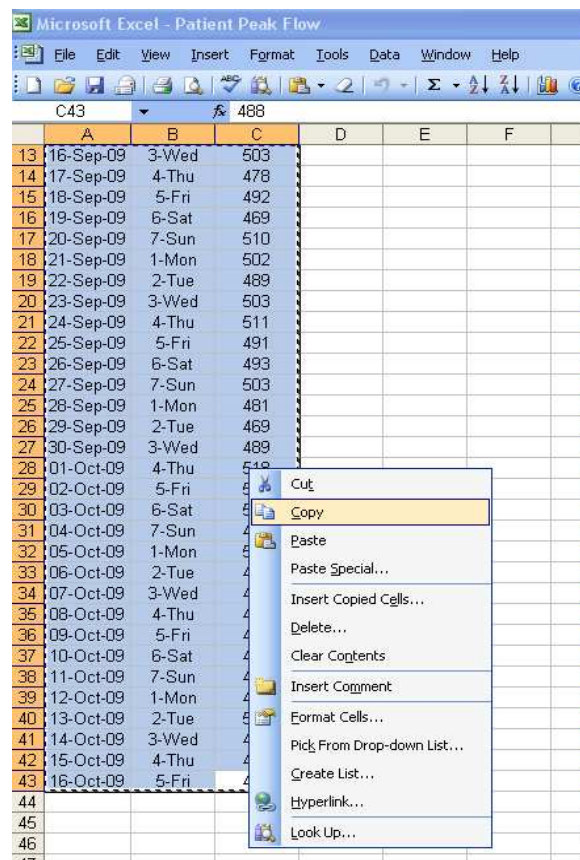


## BaseLine© Examples

### E. Create a set of charts that have a 3<sup>rd</sup> column identifier, and use it as a sub-group text identifier e.g. to uncover cyclic patterns such as seasonality

1. Open your spreadsheet and outline both the column of data in which you're interested, AND the two identifier columns – in this case the date of each reading that's been taken by the patient, as well as an indicator of the **day of the week** each reading was taken.

2. Select the **Edit** menu and the **Copy** option to copy the data to the Clipboard.

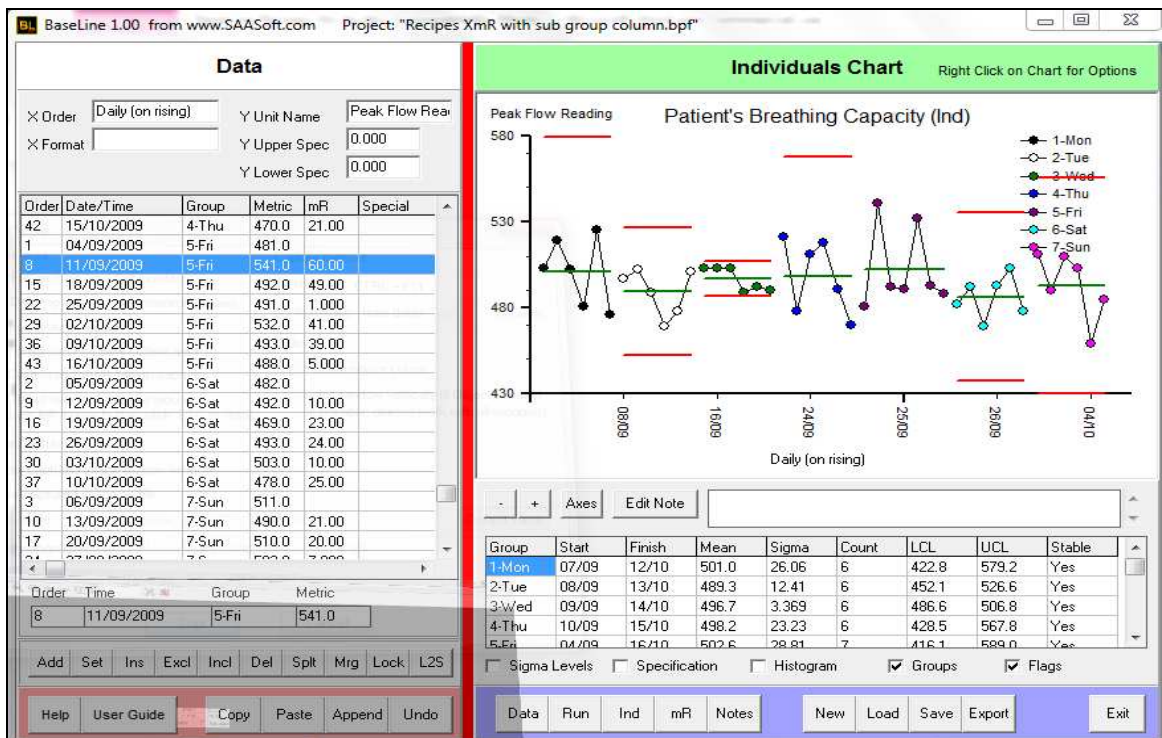


3. Label the Axes in the usual way inserting text in to the **Metric** and **Order** boxes, and should you so wish you may over-write the default scaling parameters clicking the **Axes** tab to give your chart a title. Your BaseLine© screen will appear as below.

Notice that the sub-group data has been placed in the middle column – in this example the day of the week has been identified – this is so that when split, the data will be grouped in day order, a number has been also inserted (i.e. 1-Mon, 2-Tue, and so on) otherwise the data will be grouped in alphabetical order.



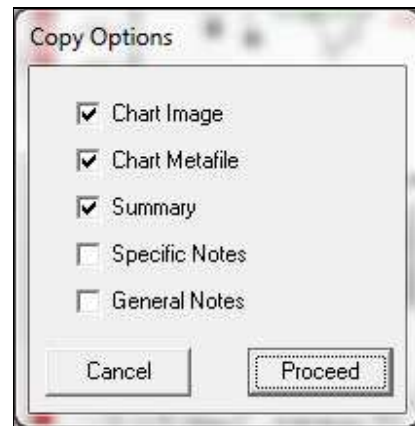
4. Place a tick  in the box marked "Show by Group" and the data will instantly be segmented:



Note: This feature works for the **Ind**ividual chart, as well as the **mR** Chart, and ignores any splits that you have made.

5. To copy n' paste any of these windows into your choice of application (e.g. an email), click **"Export"** and choose **Chart Image** or **Chart Metafile** before clicking the **Proceed** tab.

In this example a tick  has also been placed in the Summary box which will allow you to paste the summary data that appears under the chart window:



**Summary**

Group	Start	Finish	Mean	Sigma	Count	LCL	UCL	Stable
1-Mon	07/09/2009	12/10/2009	501.0	26.06	6	422.8	579.2	Yes
2-Tue	08/09/2009	13/10/2009	489.3	12.41	6	452.1	526.6	Yes
3-Wed	09/09/2009	14/10/2009	496.7	3.369	6	486.6	506.8	Yes
4-Thu	10/09/2009	15/10/2009	498.2	23.23	6	428.5	567.8	Yes
5-Fri	04/09/2009	16/10/2009	502.6	28.81	7	416.1	589.0	Yes
6-Sat	05/09/2009	10/10/2009	486.2	16.31	6	437.2	535.1	Yes
7-Sun	06/09/2009	11/10/2009	493.0	20.92	6	430.2	555.8	Yes

7. To paste an image of the chart itself, select **"Edit"** in the application of your choice, and then **"Paste Special"** and one of the **"Picture"** options, then click **"OK"**

